

# Poncet's Disease: Reactive Arthritis Due to Tuberculosis

## Tüberküloza Bağlı Reaktif Artrit: Poncet Hastalığı

Hacer Aktürk<sup>1</sup>, Didem Soydemir<sup>1</sup>, Saygın Abalı<sup>1</sup>, Ayper Somer<sup>1</sup>, Ensar Yekeler<sup>2</sup>, Kaya Köksalan<sup>3</sup>, Nuran Salman<sup>1</sup>

<sup>1</sup>Department of Pediatric Infectious Diseases, İstanbul University İstanbul School of Medicine, İstanbul, Turkey

<sup>2</sup>Department of Radiodiagnosis, İstanbul University İstanbul School of Medicine, İstanbul, Turkey

<sup>3</sup>Institute of Experimental Medicine, İstanbul University İstanbul School of Medicine, İstanbul, Turkey

### Abstract

Poncet's disease (PD) is a rare aseptic form of polyarthritis occurring with active tuberculosis (TB) infection. Signs and symptoms of arthritis resolve with antituberculous treatment. Clinicians, especially in the countries of high disease burden, should be aware of PD as one of the differential diagnoses, even in patients without typical symptoms of TB. Here we report a case of migratory polyarthritis diagnosed as active pulmonary TB and Poncet's disease. (*J Pediatr Inf 2016; 10: 72-5*)

**Keywords:** Reactive arthritis, tuberculosis, differential diagnosis

### Özet

Poncet Hastalığı, aktif tüberküloz hastalığı ile birlikte görülen nadir bir aseptik poliartrit tablosudur. Artrit belirti ve bulguları antitüberküloz tedavi ile geriler. Tüberkülozun sıklıkla görüldüğü ülkelerde çalışan klinisyenlerin hastada tipik tüberküloz belirtileri olmasa bile artrit ayırıcı tanısında Poncet hastalığını düşünmesi gerekir. Bu yazıda, gezici poliartrit ile başvuran ve yapılan tetkikler sonucunda aktif akciğer tüberkülozu ve Poncet hastalığı tanısı alan bir çocuk olgu sunulmuştur. (*J Pediatr Inf 2016; 10: 72-5*)

**Anahtar kelimeler:** Reaktif artrit, tüberküloz, ayırıcı tanı

Received/Geliş Tarihi:  
19.06.2014

Accepted/Kabul Tarihi:  
30.07.2014

Available Online Date /  
Çevrimiçi Yayın Tarihi:  
19.06.2015

Correspondence  
Address

**Yazışma Adresi:**  
Hacer Aktürk,  
Department of Pediatric  
Infectious Diseases,  
İstanbul University İstanbul  
Faculty of Medicine,  
İstanbul, Turkey  
Phone: +90 216 545 33 84  
E-mail:  
hacergunakturk@gmail.com

This study was presented at  
the 26<sup>th</sup> Annual Meeting of the  
European Paediatric  
Infectious Diseases-ESPID,  
Austria, May 13-17, 2008.

Bu çalışma 26. Yıllık ESPID  
Kongresi'nde sunulmuştur,  
13-17 Mayıs, 2008, Graz,  
Austria.

©Copyright 2016 by Pediatric  
Infectious Diseases Society -  
Available online at  
www.cocukenfeksiyon.org

©Telif Hakkı 2016  
Çocuk Enfeksiyon  
Hastalıkları Derneği -  
Makale metnine  
www.cocukenfeksiyon.org  
web sayfasından ulaşılabilir.  
DOI:10.5152/ced.2015.1789

## Introduction

Poncet's disease (PD), also called tuberculous rheumatism, is still not a well-known entity. There is uncertain information about its prevalence. Diagnosis can be established only after exclusion of other etiologies of polyarthritis and tuberculous arthritis itself (1).

It has been suggested that a vigorous immune response to mycobacteria, an arthritogenic microorganism, contributes to the arthritic process in PD (2). T-cell mediated cross reactivity between mycobacterial antigens and host cartilage is accepted as the main pathogenesis. Genetic predisposition seems to be the explanation of why some patients with develop PD and others do not (3).

Herein, we report a case of migratory polyarthritis diagnosed as pulmonary TB infection and PD, with a dramatic response of arthritis to anti-tuberculosis treatment.

## Case Report

A 9-year-old boy presented with arthralgia and edema for 2 months on the bilateral ankles and right elbow in a migratory pattern. He had fever for 2 days and decreased appetite without weight loss. He denied any respiratory symptoms. His medical history was unremarkable.

He was febrile on admission up to 38.2°C. His height and weight were appropriate for his age. Physical examination revealed pain and swelling of the right elbow. He had a BCG scar < 3 mm. The ophthalmological examination was normal.

Initial laboratory tests showed anemia (hemoglobin: 10 gr/dL, hematocrit: 30.5%, and mean corpuscular volume: 74 fL), thrombocytosis (715,000/mm<sup>3</sup>), mild leukocytosis (12,000/mm<sup>3</sup>), elevated erythrocyte sedimentation rate (93 mm/h), C-reactive protein (156 mg/L), and



antistreptolysin O (619 IU/mL) levels. Acute rheumatic fever was excluded because of non-completion of modified Jones criteria. For the differential diagnosis of rheumatologic diseases, tests such as rheumatoid factor, complement 4, antinuclear antibody, antidouble-stranded DNA, cytoplasmic antineutrophil cytoplasmic antibodies, and perinuclear antineutrophil cytoplasmic antibodies were negative. Tissue typing for human leukocyte antigen (HLA) B27 was negative. Additional laboratory tests ordered for infectious etiologies were negative for mononucleosis, toxoplasmosis, brucellosis, cytomegalovirus, parvovirus, salmonellosis, and borreliosis. Examination of bone marrow aspiration performed to exclude malignancy was normal. Routinely ordered chest X-ray showed bilateral hilar lymphadenomegaly (Figure 1). Evaluation of the patient on chest computed tomography (CT) revealed multiple mediastinal and hilar lymph nodes with a maximal size of 4×2.5 cm, a primary focus on the upper lobe of right lung, and granulomas with a diameter of 1 cm on bilateral lungs (Figure 2). On abdominal CT, ordered for pathological lesions of the spleen noticed on lower sections of the chest CT, three hypodense splenic nodules and multiple mesenteric lymphadenopathies were observed. These findings on CT were interpreted as a TB infection. The tuberculin skin test was measured as 18 mm. An interferon gamma (IFN- $\gamma$ ) release assay, namely QuantiFERON<sup>®</sup>-TB Gold test (QFT-G, Cellestis Limited; Carnegie, Victoria, Australia), was found to be positive. Synovial fluid was inflammatory in character with a leucocyte count of  $5 \times 10^9/L$  and no microorganisms were seen on Gram stain. Standard culture, acid-fast staining, and tuberculosis culture of the synovial fluid yielded no pathogen. Tuberculosis culture of gastric lavage fluid was positive for *Mycobacterium tuberculosis*. Antituberculous treatment (isoniazid, rifampicin, ethambutol, and pyrazinamide) was initiated. On family screening for TB, the father had also been diagnosed as having TB. After 3

weeks of antituberculosis treatment, signs and symptoms of arthritis disappeared.

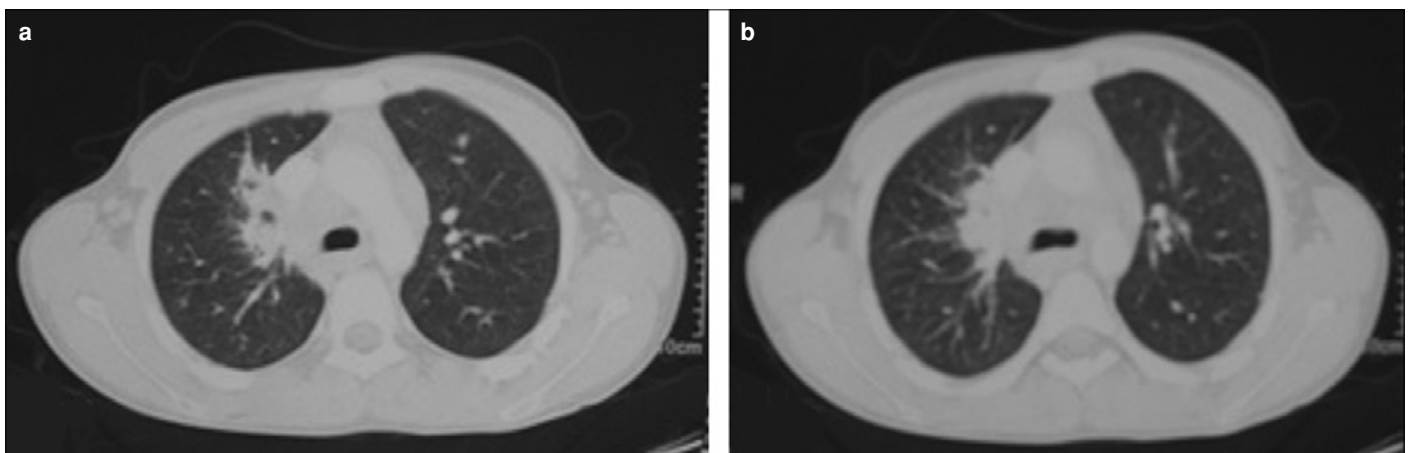
Informed consent was obtained from the patient described in this report.

## Discussion

A sterile reactive arthritis that may complicate TB is a less known entity than septic arthritis and is therefore often missed and underdiagnosed. The characteristic different features of septic arthritis and PD are shown in Table 1. Acute presentation of arthritis together with acute onset of TB is the most commonly observed presentation (4). However, in a review of cases, it is stated that six out of seven patients had developed arthritis after initiation of



**Figure 1.** Chest X-ray of the patient showing bilateral hilar lymphadenomegaly



**Figure 2. a, b.** Primary focus extending from the upper lobe to the apical segment of the right lung, and multiple granulomas on bilateral lungs

**Table 1.** The main differences between tuberculous arthritis and Poncet's disease

Tuberculous septic arthritis	Poncet's disease
Generally chronic presentation	Generally acute or subacute presentation
Generally monoarticular	Generally poly-oligoarticular
Generally large and medium weight-bearing joints are affected.	Generally large and small joints are affected.
Sacroiliitis may occur.	Generally not associated with sacroiliitis
Synovial fluid cultures frequently yield the pathogen.	Standard cultures and cultures for tuberculosis are negative.
No association with HLA-B27 positivity.	Sometimes may be associated with HLA-B27 positivity.
Responds rather slowly to antituberculous treatment.	Generally responds to antituberculous treatment within a few weeks.
May cause joint destruction.	No residual joint destruction
HLA: human leukocyte antigen	

antituberculous treatment (5). On the other hand, arthritis appeared before presentation of TB infection in our case. Accordingly, it is proposed that PD develops in a variable pattern during the course of active TB infection.

Because PD is a diagnosis of exclusion, synovial fluid analysis, culture, or even biopsy should be obtained to prove the sterility of the joint. This is important because the prognosis of tuberculous arthritis and PD is different. However, this condition may not always be available. In a review of PD, synovial fluid culture and histology were performed for only 30% of cases. In our case, this requisite for diagnosis is met by sampling the synovial fluid of the affected joint (6).

The presented case was asymptomatic for the primary site of TB. The diagnosis of such cases is more difficult than of cases of polyarthritis with a clear primary site for TB. This has resulted in a wide range of differential diagnoses, including other rheumatologic diseases, other infectious agents causing polyarthritis, and malignancies.

Rapid resolution of arthritis is generally expected once antituberculous treatment is initiated (4, 6), which may be accepted as a therapeutic confirmation of the clinical diagnosis. Signs and symptoms of our patient were relieved in 3 weeks from the beginning of the antituberculous treatment.

It is believed that genetic predisposition plays a key role in the development of PD in patients with TB. Several studies in the literature have found the presence of some Human leukocyte antigen (HLA) alleles in patients with PD (4, 7, 8). On the other hand, in a majority of cases in the literature, the presence of HLA-B27 was not tested (5, 6). Accordingly, the association of HLA-B27 remains uncertain and controversial. We tested for HLA-B27 in a diagnostic work-up of rheumatological arthritis and it was negative in our patient.

In conclusion, we think that especially, in countries with a high prevalence of TB, diagnostic work up of arthritis should also include TB, because signs and symptoms of arthritis may develop before signs and symptoms of the primary TB infection itself, as in our case. A thorough

search for the primary site of infection with adequate history, physical examination, and simple chest X-rays should be performed. This approach may prevent the initiation of immunosuppressive drugs in patients with an improper diagnosis of rheumatological disease, which would worsen the underlying TB infection.

**Informed Consent:** Written informed consent was obtained from the patient.

**Peer-review:** Externally peer-reviewed.

**Author Contributions:** Concept - D.S., S.A.; Design - H.A.; Supervision - A.S., N.S.; Collection and/or Processing - H.A., S.A.; Analysis and/or Interpretation - E.Y., K.K.; Literature Review - H.A., D.S.; Writing - H.A.; Critical Review - A.S., N.S.

**Conflict of Interest:** No conflict of interest was declared by the authors.

**Financial Disclosure:** The authors declared that this study has received no financial support.

**Hasta Onamı:** Yazılı hasta onamı bu çalışmaya katılan hastadan alınmıştır.

**Hakem Değerlendirmesi:** Dış bağımsız.

**Yazar Katkıları:** Fikir - D.S., S.A.; Tasarım - H.A.; Denetleme - A.S., N.S.; Veri Toplanması ve/veya İşlemesi - H.A., S.A.; Analiz ve/veya Yorum - E.Y., K.K.; Literatür Taraması - H.A., D.S.; Yazıyı Yazan - H.A.; Eleştirel İnceleme - A.S., N.S.

**Çıkar Çatışması:** Yazarlar çıkar çatışması bildirmemişlerdir.

**Finansal Destek:** Yazarlar bu çalışma için finansal destek almadıklarını beyan etmişlerdir.

## References

- Dall L, Long L, Stanford J. Poncet's disease: tuberculous rheumatism. *Rev Infect Dis* 1989; 11: 105-7. [\[CrossRef\]](#)
- Southwood TR, Gaston JSH. The molecular basis of Poncet's disease. *Br J Rheumatol* 1990; 29: 491. [\[CrossRef\]](#)

3. Rueda JC, Crepy MF, Mantilla RD. Clinical features of Poncet's disease. From the description of 198 cases found in the literature. *Clin Rheumatol* 2013; 32: 929-35. [\[CrossRef\]](#)
4. Valleala H, Tuuminen T, Repo H, Eklund KK, Leirisalo-Repo M. A case of Poncet disease diagnosed with interferon-gamma release assays. *Nat Rev Rheumatol* 2009; 5: 643-47. [\[CrossRef\]](#)
5. Abdulaziz S, Almoallim H, Ibrahim A, et al. Poncet's disease (reactive arthritis associated with tuberculosis): retrospective case series and review of literature. *Clin Rheumatol* 2012; 31: 1521-28. [\[CrossRef\]](#)
6. Kroot EJ, Hazes JM, Colin EM, Dolhain RJ. Poncet's disease: reactive arthritis accompanying tuberculosis. Two case reports and a review of the literature. *Rheumatol (Oxford)* 2007; 46: 484-89. [\[CrossRef\]](#)
7. Ozgul A, Baylan O, Taskaynatan MA, Kalyon TA. Poncet's disease (tuberculous rheumatism): two case reports and review of the literature. *Int J Tuberc Lung Dis* 2005; 9: 822-24.
8. Lugo-Zamudio GE, Yamamoto-Furusho JK, Delgado-Ochoa D, et al. Human leukocyte antigen typing in tuberculous rheumatism: Poncet's disease. *Int J Tuberc Lung Dis* 2010; 14: 916-20.